

ON THE CUTTING EDGE OF MICRO DRILLING

**NEW!****CTS-3030**

The First High Speed, Ultra Precision
Spindle with Coolant Through the Tool

COOLANT THROUGH SPINDLE FOR EXTRA LENGTH SOLID CARBIDE DRILLING

For use with existing E3000 Spindle Systems
(EM-3030-T / EM-3030-T-J-2M Motors)

Uses standard CHA Collets with NEW CHN-CTA-xxx Collet Nuts
Coolant Pressure from 290 to 2,900 PSI (2.0 – 20.0 MPa)

- Coolant through the cutting tool
- Drilling depths up to 20xD for shank sizes 3.0, 3.175 & 4.0mm
- Variable speed up to 30,000 rpm
- Spindle accuracy within 1 Micron
- Smaller, more manageable chips for better chip flow
- Eliminates the need for pecking
- Increased tool life
- More accurate holes
- Reduced cycle times

**NSK AMERICA CORPORATION**

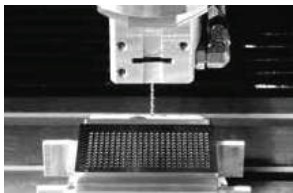
CTS-3030

COOLANT THROUGH SPINDLE

FOR USE WITH E3000 ELECTRIC SYSTEM

High-speed, ultra-precision **CTS-3030** Coolant Through Spindles drastically reduce cycle times. They feature small diameter drills ($\varnothing 3.0$), allow for deep hole drilling ($L/D=20$) and eliminate the need for pecking.

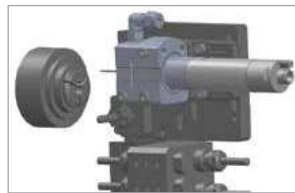
Results Achieved With CTS-3030: Using 20MPa of high pressure coolant, drilling with a $\varnothing 3.0$, 20 X Diameter Drill is possible. Coolant can now be introduced through a minimum diameter $\varnothing 0.5$ drill.



S50C Drilling Example

Tool Diameter: $\varnothing 2.0$

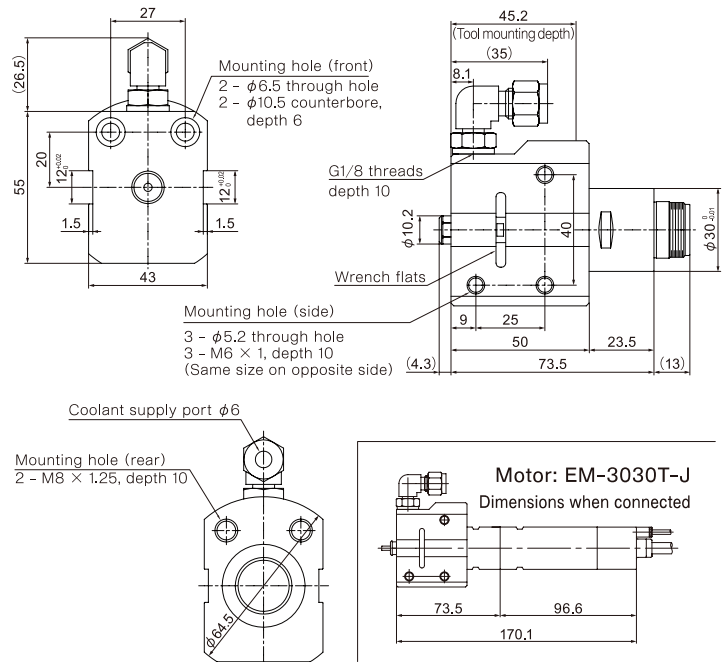
Depth: 20mm, No Peck



Lathe Installation Image

When connected to the EM-3030T-J motor

DIMENSIONS



SPECIFICATIONS

MAX. RPM	30,000 min ⁻¹	SHANK DIAMETER OF CORRESPONDING TOOL	$\varnothing 3.0$, $\varnothing 3.175$, $\varnothing 4.0$ mm
COOLANT PRESSURE	3.0 – 20.0 MPa	SPINDLE ACCURACY	Within 1 μ m
STANDARD ACCESSORIES	Wrench (8 x 5), (9 x 11), (22 x 27): 1 pc. each		
OPTIONS*1	Collet*2	CHA-3.0AA (91494), CHA-3.175AA (91496), CHA-4.0AA (91495)	
		CHA-3.0 (91430), CHA-3.175 (91493), CHA-4.0 (91440)	
	Collet nut	CHN-CTA-3.0 (7798), CHN-CTA-3.175 (7799), CHN-CTA-4.0 (7800)	

CODE NO. **7797**

MODEL **CTS-3030**

*1 The collet and the collet nut are sold separately. Please match the collet and collet nut size.
 *2 High precision AA grade types are highly recommended.

CTS-3030 CONNECTION DRAWING

