

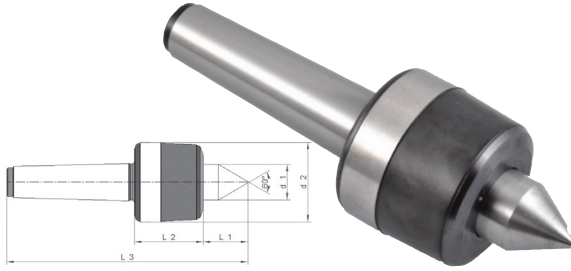
Live Centers

For Accurate Work Holding in Conventional or CNC Lathes

Standard Point

Model N

For a wide range of general turning work

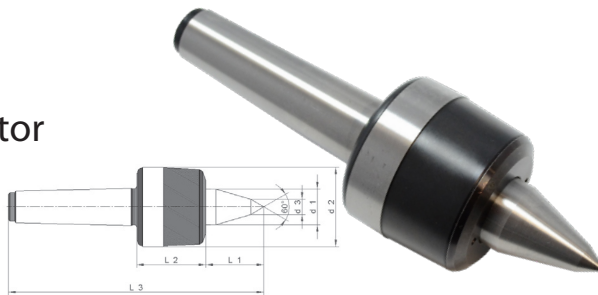


EDP Number	Part Number	Morse Taper	Load Factor lbs	Dimensions (Inch)						Price
				Ø 1	Ø 2	Ø 3	L1	L2	L3	
Model N										
LGN200B	R-200-N	2	400	0.709	1.654	--	0.945	1.378	5.039	\$275
LGN300B	R-300-N	3	890	0.866	1.929	--	1.142	1.850	6.417	\$335
LGN400B	R-400-N	4	1,765	1.181	2.480	--	1.378	2.047	7.717	\$425
LGN500B	R-500-N	5	3,860	1.299	3.346	--	1.890	2.520	9.843	\$620
Model C										
LGC300B	R-300-C	3	890	0.866	1.929	0.394	1.496	1.850	6.850	\$380
LGC400B	R-400-C	4	1,765	1.181	2.480	0.433	1.811	2.047	8.150	\$485
LGC500B	R-500-C	5	3,860	1.299	3.346	0.709	2.520	2.520	10.472	\$686

Extended Point

Model C

Increases tool clearance and operator visibility for work on small parts or machining close to workpiece end



▶ Robust, Safe, Precision Guaranteed!

▶ Fully hardened and precision ground

▶ Maintenance free

▶ High precision with a maximum run-out of **0.00012"** for Morse tapers no. 2, 3, 4 and **0.00016"** for Morse Taper no. 5

▶ Capable of bearing workloads up to **2,200 lbs** and speeds up to **5,000 rpm**

World's Most Complete Drill Chuck Offering



CALL TODAY
for a complete catalog!
740-392-1549